

MEANINGFUL PARTNERSHIP

Series No. 5





PROJECT MANAGER



As Project Manager, Melanie Torres (2024 VPA Scholar) coordinated deliverables across five groups to oversee the efficiency of the project. She ensured all team members were well-informed, engaged, and on schedule while also resolving any conflicts that arose. Notably, she designed and curated the Meaningful Partnership booklet and exhibition at Genet Gallery.

SERVICE LEARNING INTERN



Iona Volynets (2024 Marshall Scholar and Syracuse University Scholar), an intern from the Shaw Center, offered assistance to the Project Manager and the designers in DES 451 and construction managers in CME 454. They played a vital role in fostering a connection between the Shaw Center, which oversees service learning classes, and the initiative.

COMMUNITY DESIGN STUDIO

Welcome to the latest endeavor of the Community Design Studio, now in its sixth year of collaborative projects with community organizations, captured within these pages. Since its establishment in Fall 2017, the Community Design Studio, affectionately known as Meaningful Partnership, has been at the forefront of design education. Grounded in the principle of fostering connections with community organizations, this studio has played a pivotal role in providing impactful design and build solutions.

At its core, the Community Design Studio embodies a unique collaboration between the Syracuse University Environmental and Interior Design DES 451 studio course and the ESF Construction Management CME 454 course. Together, students from these disciplines harness their creativity and analytical skills to tackle community projects aimed at enriching the social, environmental, economic, and political fabric of Syracuse.

In 2022, the Community Design Studio found a natural alignment with the Mary Ann Shaw Center for Public and Community Service, marking a significant milestone in our journey. Under the continued guidance of Laurel Morton and Pamela Heintz, alongside the invaluable support of intern Iona Volynets, this partnership has elevated both our students' experiences and our impact on community clients.

During the academic term of 2023-2024, our aspiring designers and construction managers embarked on the transformation of the South Side Communication Center. Serving as a vital resource hub for families, particularly youth and women, in Syracuse's South Side community, this organization presented a compelling challenge. Through immersive site visits and stakeholder engagements, our teams developed innovative design proposals, construction timelines, and estimates, reflecting a collaborative spirit mirroring professional industry practices.

This year marks a significant milestone as we celebrate the honor of receiving recognition for our collaborative efforts in bridging education with the community. Being awarded the Institutional Innovation Award by IDEC (Interior Design Educators Council) underscores the profound impact of our work and serves as a testament to the dedication, creativity, and passion invested in the Community Design Studio. It highlights the transformative power of meaningful partnerships and collective synergy in driving positive change within our community.

I invite you to delve into the narratives, designs, and insights captured within these pages. May they inspire you to reimagine the possibilities of community-centric design and collaborative partnerships.

Zoriana Dunham
Assistant Teaching Professor
Program Coordinator, Environmental and Interior Design Program
Syracuse University

DESIGN KICK-OFF /
PROJECT INTRODUCTION

08



PRE-DESIGN /
SCHEMATIC DESIGN

10



CONSTRUCTION
DOCUMENTS

12



AUGUST

SEPTEMBER

OCTOBER

NOVEMBER

DECEMBER

FALL SEMESTER



09

SITE SURVEY / AS - BUILT /
BLOCK BLITZ



11

DESIGN DEVELOPMENT

SPRING SEMESTER

SITE VISIT /
CONSTRUCTION MATERIAL
QUANTITY TAKE-OFFS

02



FINAL PRESENTATION /
COMMUNITY DESIGN
PROJECT EXHIBITION

04

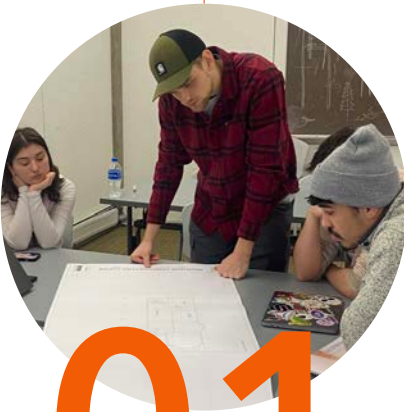


JANUARY

FEBRUARY

MARCH

APRIL



01

DESIGN AND
CONSTRUCTION KICK-OFF



03

CONSTRUCTION
SCHEDULE / ESTIMATION /
VALUE ENGINEERING

THE PROJECT OVERVIEW

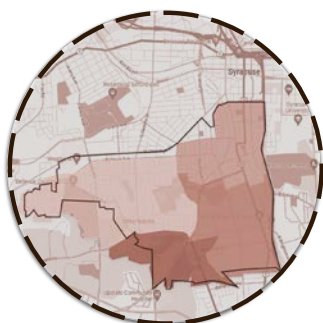


The South Side Communication Center (SSCC) was developed in 2011 out of the South Side Community Coalition, which included Syracuse University. The Center wants to continue to meet the needs of the locals through providing resources to support literacy, wellness, reproductive justice, and more. It houses Sankofa, a Black woman-led Reproductive Health and Healing Center, and Vicky's Closet, which provides free clothing to community members. In addition, it hosts speakers, art classes, board games, sewing classes, tutoring sessions, mental health workshops, anti-gun violence workshops, pop-up exhibitions, writing retreats, open-mic nights, poetry nights, reading sessions, and photography sessions.


Like many institutions, the South Side Communication Center had its programming impacted by the COVID-19 pandemic. Assistant Provost for the Arts and Community Programming at Syracuse University, Miranda Traudt, works closely with the SSCC and saw this opportunity for rejuvenating the space. Coming out of this disruption, the SSCC is partnering with the Environmental and Interior Design program in order to remodel its space to make it more accessible, increase storage space, make the attic and basement more serviceable, and make the space better suited to meet the needs of the Center's staff and constituents.

PROFILE OF THE SOUTHSIDE


SYRACUSE



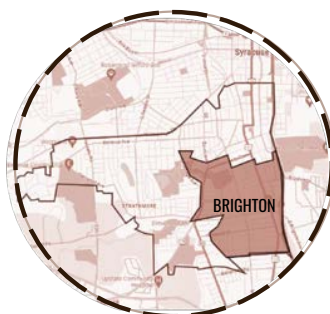
 2.2 Persons Average Household Size

 1.0 Number of Cars Per Household


 35.6% Percentage of Family Households


 31.3% Percentage of Households below poverty level


SOUTHSIDE



 3.17 Persons Average Household Size

 0.75 Number of Cars Per Household

 81.24% Percentage of Family Households

 35% Percentage of Households below poverty level

RELEVANCE TO SSCC



- Understanding who SSCC will affect and how we can specifically cater to the needs of the surrounding community
- Needs to function for large families
- Need to include public transit/pedestrian users

Drawings produced by Lillian, Sooz, Luke, Emma, and Chris

The South Side Communication Center sits in a neighborhood just South of Syracuse's historic 15th Ward. Due to housing discrimination, this was historically considered a Black ward in Syracuse, housing almost 90% of the city's Black residents. Syracuse's Urban Renewal Plan in the 1960s targeted over 27 blocks in the 15th ward to create the I-81 highway and new government buildings. This caused 75% of the local Black population to be relocated, much of it into the neighborhoods South and East of the 15th ward, including the neighborhood where the SSCC currently resides. The SSCC stands one block from the AME Zion church, a historically Black church whose roots date to the 1830s and whose congregations were active in the Underground Railroad and the Civil Rights era of the 1960s. This history is important to SSCC, since its purpose is to rebuild the South Side Black community.

"As soon as I pulled into the neighborhood I could feel the energy and excitement in the community"
-Hartley Peterson



COMMUNITY INVOLVEMENT





On a sunny Friday in September, the Environmental and Interior Design class all came together to volunteer as a group for the Block Blitz community event. This event, sponsored each year by Home Headquarters Syracuse, brings together community stakeholders to help repair, landscape, and paint up a neighborhood of up to 50 homes. This year, the class helped with painting the Creek Walk with murals designed by local artist Pat Condon.

Students overwhelmingly loved the experience, claiming that it was exciting, thrilling, rewarding, eye-opening, and just plain fun. They found that it was an opportunity to both bond with each other, connect with the Syracuse community, and learn more about the neighborhood they will be working in. Students found that it made them better designers, with Madison Prunty claiming that *"volunteering in the South Side added another level of analysis to the community that can be used for our South Side Community Project."* Many students concluded that they hope that they will be able to participate in community engagement projects like these again, or that they encourage other students to participate.



"It was an amazing experience to see the community of Syracuse come together in order to help one of the neighborhoods."

- Jessica McEvoy





“Getting to go on-site to meet the people who we are creating these designs for made the project much more meaningful and real.”

- Luke Emlet

On September 7, 2023, the Syracuse University design class conducted a site visit to the South Side Communication Center. They measured the space and analyzed the strengths and weaknesses of the building. In addition, they heard from SSCC staff, Associate Provost for Strategic Initiatives Marcelle Haddix, and Associate Provost for Arts and Community Programming Miranda Traudt.

Through these talks, they learned about the history of the South Side Communication Center, the other nonprofits connected to their work, the current work being completed in the building, and the organization’s goals for the renovation. Afterward, they broke out into teams to measure the space in order to create a 3D model of the building. They were able to identify many issues that need fixing or spaces for greater improvement but also noticed how beautiful the existing space is.

Students felt overwhelmingly that the site visit allowed them to learn about the space and its history, the needs of the community, and the potential that the location holds. Students also felt that they learned a lot from the process of taking measurements. Though the process could be a bit intimidating, since it was a hands-on project with real implications, the visit was informative, exciting, interesting, and even fun. Brianna Starck said that “[I] felt even more engaged in this project after witnessing and experiencing how the center is occupied and how it looks inside.” In addition, students often expressed how valuable it was to hear from the people who worked there. Maegan Warner stated that “It was very important for us to hear from people who have firsthand experience and knowledge with the South Side Communication Center.”

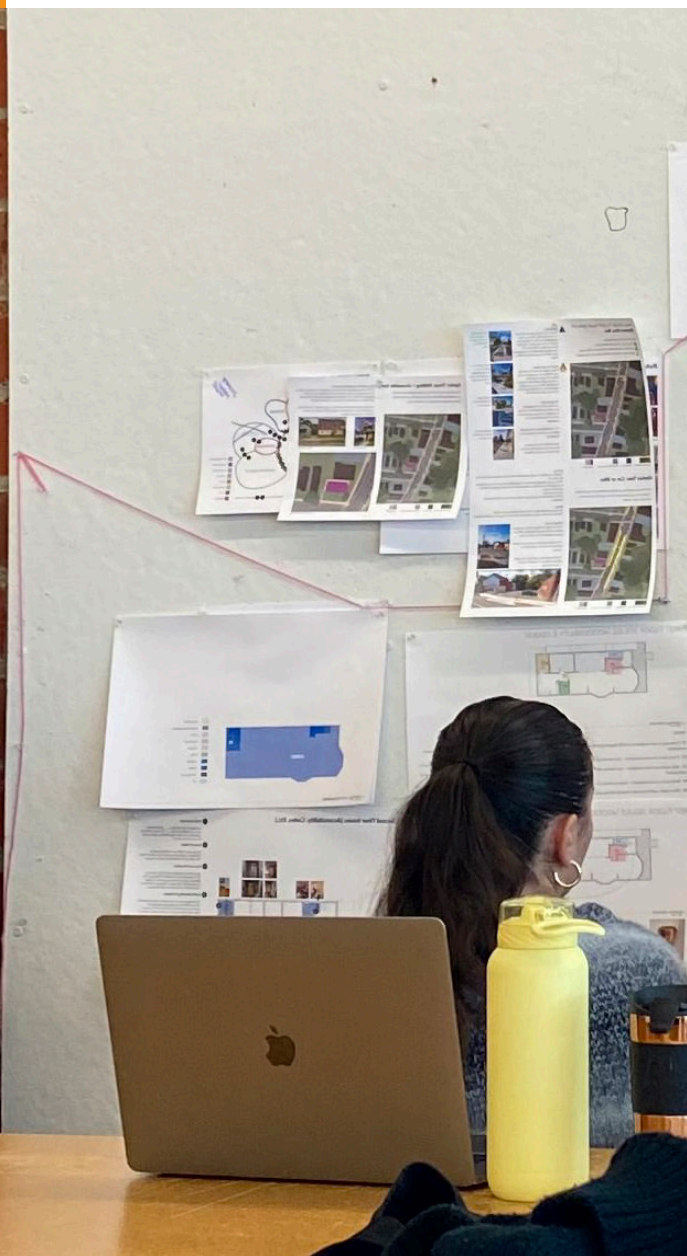
SITE VISIT TO SSSCC



SCHEMATIC DESIGN

After meeting with the client and learning more about the area and its history, each team began the Schematic Design process. During this phase of design, teams created various diagrams and visual representations to express their range of ideas to present for the client.

At the end of this phase, each team created a presentation including mood boards, material boards, spatial diagrams, floor plans, bubble diagrams, color boards, demographic maps, and summaries of their research on the South Side neighborhood and the South Side Communication Center.





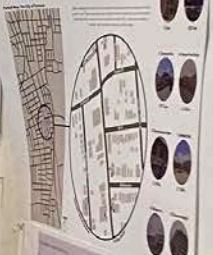
South Side Communication Center Redesign

Community
An intentional social gathering space that captures the
rich architectural history, local character, and

The Wood scenario
was a bridge from
displacement (Grand
Boulevard) Social
cohesion was provided
by 16-day churches and
the Doctor Center,
the most prominent
community institution.
But most of all, the
line that bound them
on the grounds
that blossomed from
provisionally
everyone in the
community.



Important Landmarks



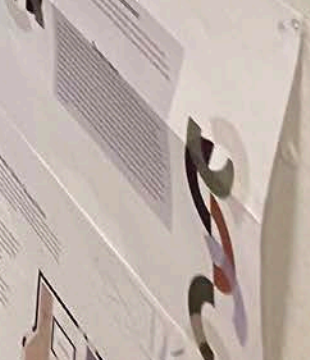
Existing Building Information



Solar Study



Intentions

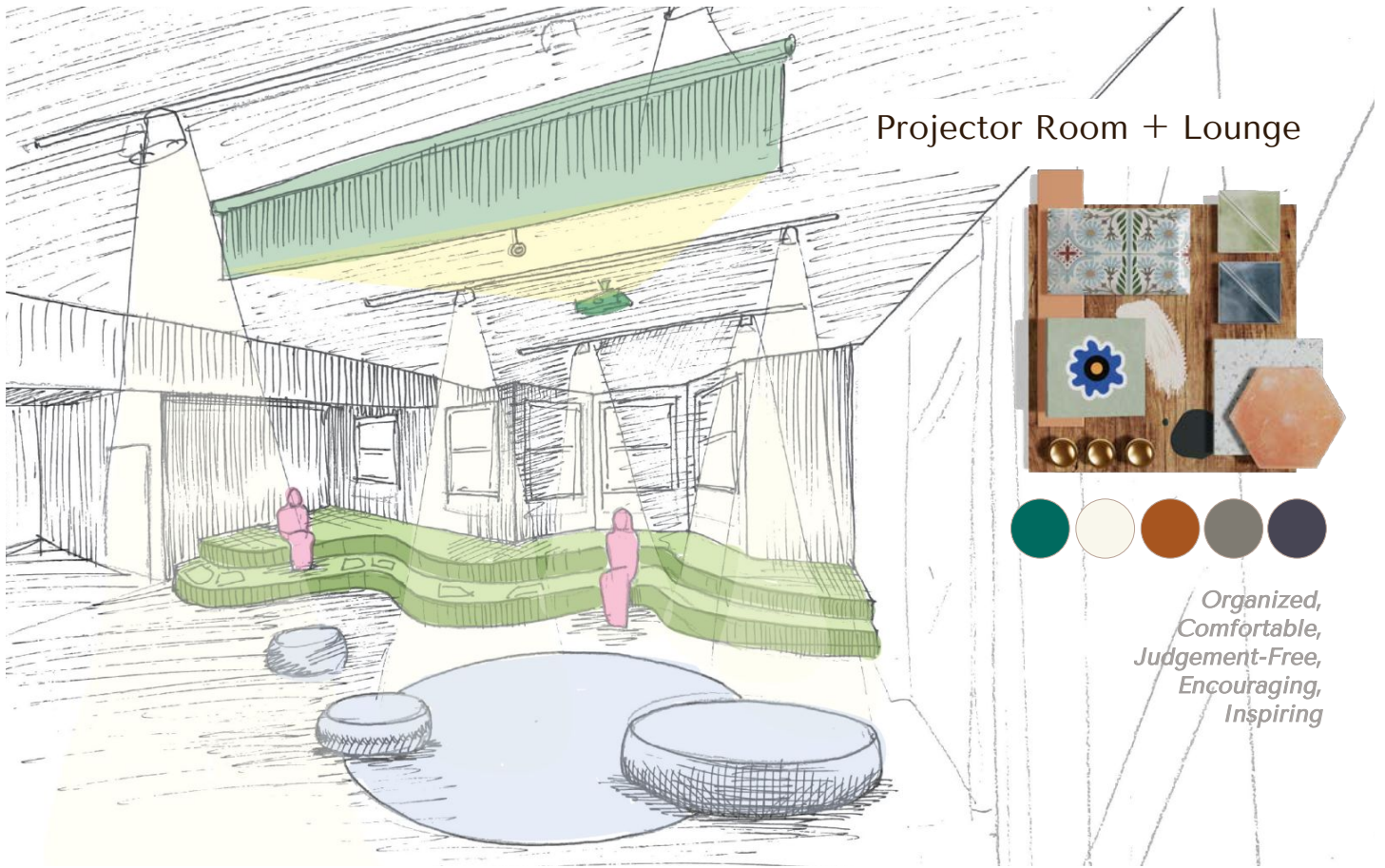


Literacy Area



*Comfort,
Focus,
Connection,
Warmth,
Belonging*





Projector Room + Lounge

*Organized,
Comfortable,
Judgement-Free,
Encouraging,
Inspiring*

Drawings produced by Lillian Cubbin, Luke Emlet, Emma Wasserman, Christopher Rose, & Susan Gilmer-Hill



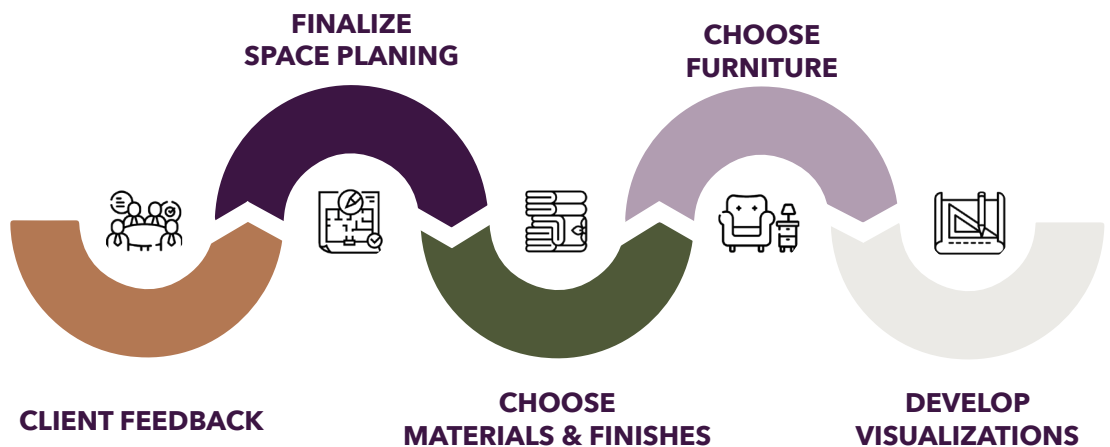
"It is really nice to finally be designing for real people and actually have a real impact" & "the client seemed so appreciative of our hard work." - Roselynn Hodges





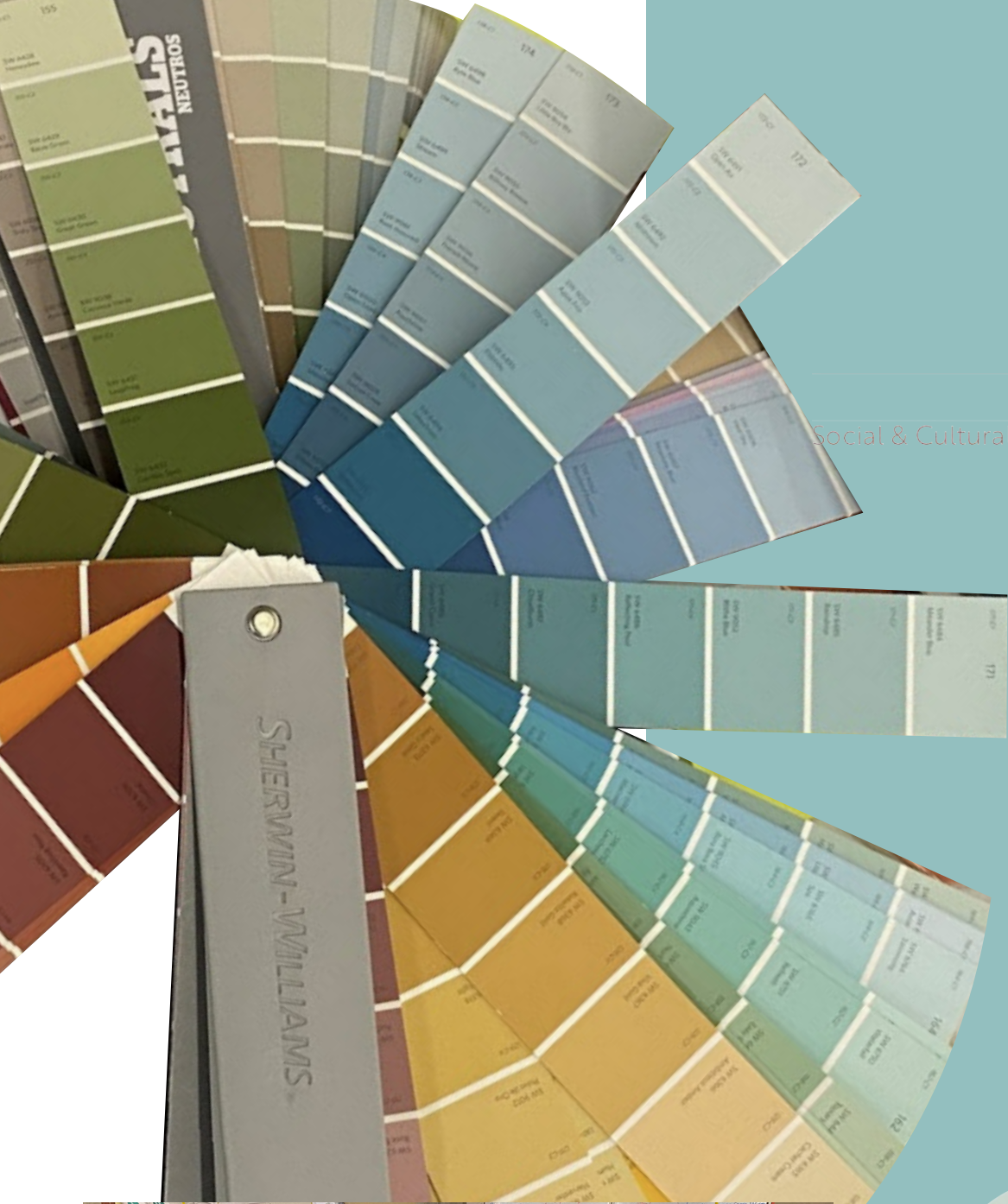
The process of putting together and presenting the student's schematic design work was challenging but highly rewarding, and a growth experience for each student. On Tuesday, October 17, each group of students presented their work to the client. The students reported that it strengthened their teamwork skills, design skills, and presentation skills, preparing them for their futures after graduation. Once the hard work of putting together the presentation was done, presenting to a real client was intimidating but highly rewarding, and helped them fine tune their designs. In addition, many agreed that the feedback was very useful going into the next phase of design. Students were also grateful for the experience of working with a real client, especially a community partner.

Our Next Steps



“This process was our way of becoming invested in the future of Syracuse”

-Lillian Cubbin



Social & Cultural Art Therapy Room



Built-ins



DESIGN DEVELOPMENT

Built-In
Storage

Pin-Up
Space

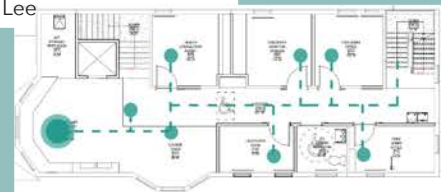


Built-In
Bench

Drawings produced by Hartley
Peterson, Roselynn Hodges, Ruoyan
Yu, & Jae Bin Lee



Flexible
Furniture



Once they'd received feedback and approval from the client at the schematic design presentation, students moved on to the Design Development phase. This meant creating design documents like a site plan, detailed floor plans, selected materials and finishes, building elevations, interior elevations, and interior and exterior rendering.

Ramp



Exterior

Takeaways



1

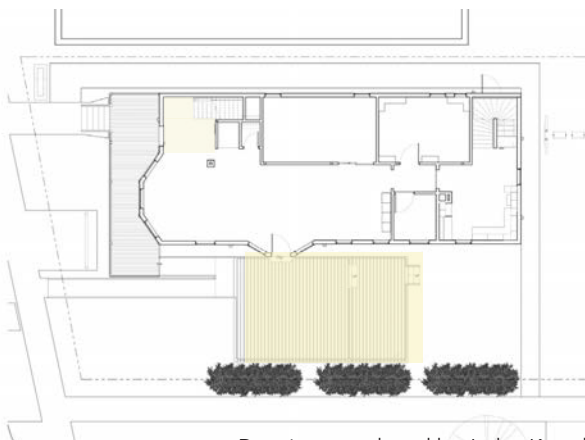
Ramp begins at the front of the building

2

Ramp connects to the deck and then the porch.

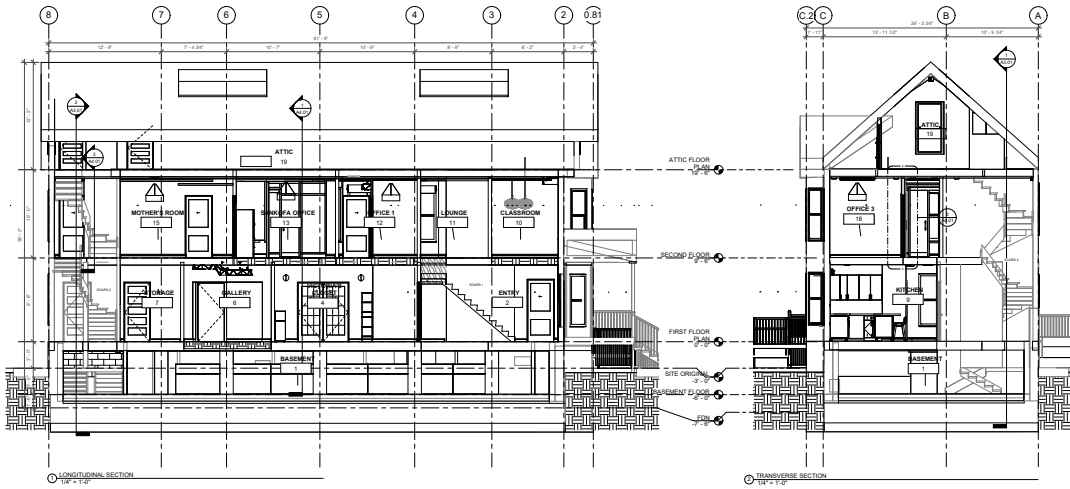
3

Ramp is designed to leave enough clearance on the side of the house to allow access the plumbing systems.



SOUTH SIDE COMMUNICATION CENTER

2331 S SALINA ST., SYRACUSE, NY 13205



Drawn by
 AFTON SERVISS, FAUSTINA ZHANG, MAEGAN WARNER, &
 SEBASTIAN MELÉNDEZ
BUILDING SECTIONS
 A3.01

Drawings produced by Afton Serviss, Faustina Zhang, Maegan Warner, & Sebastian Melendez

FINISH PALETTE



As the Design Development presentation neared, students prepared furniture, fixtures, and equipment booklets. These booklets show the materials the group selected for the project, which contractors and clients refer to when making selections about construction of the final site.

Design development documents included: Site plans, floor plans, ceiling plans, furniture plans, finished floor plans, building sections, interior elevations, as well as furniture, fixtures, and equipment selections.

Students delivered their design presentation to clients, and submitted final design development documents in December.

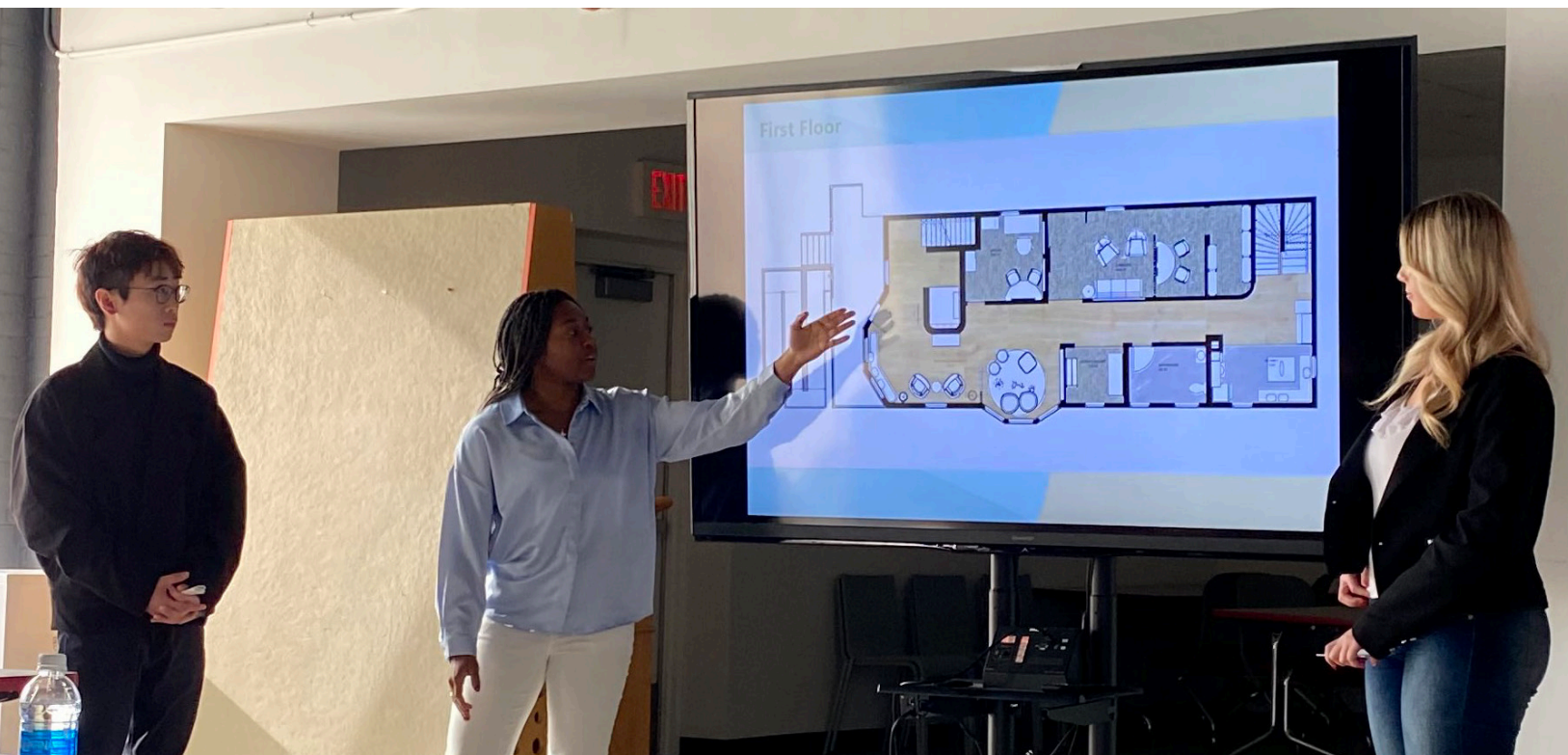
TYPE	CODE	NAME	MODEL NUMBER	MANUFACTURER	IMAGE	COLOR	PATTERN	SIZE	INFORMATION
PAINT	PT-6	Saper Paint Exterior Acrylic Latex	SW 6521	Sherwin Williams		Notable Hue	Flat	1 gallon	
	PT-7	Saper Paint Exterior Acrylic Latex	SW 7551	Sherwin Williams		Greek Villa	Flat	1 gallon	Apply on exterior trim
	PT-8	Wood Scapes Exterior Acrylic Solid Color House Stain	SW 3029	Sherwin Williams		Ember	Flat	1 gallon	Apply on exterior doors
SOLID SURFACE	SS-1	Perital Quartz	SKU: PQ5134P	Architectural Surfaces		Stella Gold	Quartz	126" x 63"	1-1/4" thick
	SS-2	Ivory White	SKU: S029	HIMACS		Ivory White	Resin	35in x 145in, 30in x 38in	Built-in desk feature in Makerspace
STAIN	ST-1	Interior Semi-Transparent Stain	MW 453	Sherwin Williams		Honeymade	Stain	1 gallon	Apply on all interior doors
	ST-2	Wood Scapes Exterior Acrylic Solid Color House Stain	SW 3029	Sherwin Williams		Ember	Stain	1 gallon	Apply on all exterior doors
TILE	TL-1	Nanoglass Polished Tile		TieBar		White	Polished	12x12	Apply in a random pattern on the floor
	TL-2	Ocean Caliza	SKU: 100325231	Porcelanosa		Grey	Matte	33.3x100 cm	Apply in a random pattern on the wall from floor to 32' 40"
TRANSITION	TR-1	Cove Shaped profile for inside wall corners and floor/wall transitions	DILEX-AHK	Schlüter Systems		Bright White		7mm	Apply in a random pattern on the wall from floor to 32' 40"
WALL BASE	WB-1	Profile Wall Base		General Wood Manufacturers		PT-3	Wood Species	4"	Refer to interior elevation detail callout 1 Wall Base
WALL COVERING	WC-1	Wolf Gordon Digital Print 1		Wolf Gordon		SSCC Entrance	Custom PVC-free wallcoverings	12' - 1" x 8' x 4'	See interior elevation 1 on sheet A5.01
	WC-2	Wolf Gordon Digital Print 2		Wolf Gordon		SSCC Wayfinding	Custom PVC-free wallcoverings	5' - 7" x 8' 4"	See interior elevation 1 on sheet A5.01
	WC-3	Wolf Gordon Digital Print 3		Wolf Gordon		SSCC Logo	Custom PVC-free wallcoverings	7' - 6 3/4" x 9' - 2 1/2"	See interior elevation 11 on sheet A5.01
	WC-4	Wolf Gordon Digital Print 4		Wolf Gordon		Victoria's Closet	Custom PVC-free wallcoverings	8' - 11 3/4" x 8' 4"	See interior elevation 4 on sheet A5.01
	WC-5	Vinyl Wallcovering in Contract Wallcovering Collection	LDN 5369	Wolf Gordon		Mulberry	Leiden	52" H x 22.25" V & random match	See elevation

Drawings produced by Afton Serviss, Faustina Zhang, Maegan Warner, & Sebastian Melendez

“The most fulfilling part was certainly presenting to the clients and getting their reaction to the space, and being able to show off all the hard work we did. It was really cool getting to design a space that may lead to something that really exists.

- Chris Rose

The students found that the Design Development phase was very challenging, pushing them to develop new skills in both design and teamwork. Over the course of many long and late nights, students developed their designs based on client feedback. In addition, students found that the challenging work really brought them together as teammates, classmates, and as friends.



At the end, the presentation itself was highly rewarding, as students were thrilled to get to present their hard work to a real client, and were met with a highly positive reception and constructive feedback. They took this feedback to fine tune their designs before sending them off to their partners in Construction Management.

CONSTRUCTION DOCUMENTS



Though presentations were over, the students still had more work and learning ahead of them. Using the feedback gained from their presentations, the teams returned to their work to create construction documents to be passed on to their partner class in the Spring. This phase was time consuming but shaped the students as designers, giving them extensive practice working with the software they will be using throughout their careers.

At the close of the semester, students felt proud of their accomplishments, with students saying that this phase *"Everyone in the group contributed a lot of effort to the CD phase. We are so proud of ourselves to see it all completed."* (Faustina Zhang). Students also reflected on how much knowledge they had gained from the work, saying *"The CD phase allowed us to improve our professional skills in producing Revit construction documents, which could be helpful for our future careers."* (Ziqian Luo) and *"During this phase I really strengthened my revit skills and knowledge of construction documents... all skills that I will use in the future."* (Emma Wasserman). This final push of work also brought the teams closer together, as they continued to work on their team cohesion over late nights, sessions at the library, and dinners.

EVENTS



“The completion of the Construction Documents phase was influential to my growth as an interior designer.”
- Afton Serviss

SCHEDULE

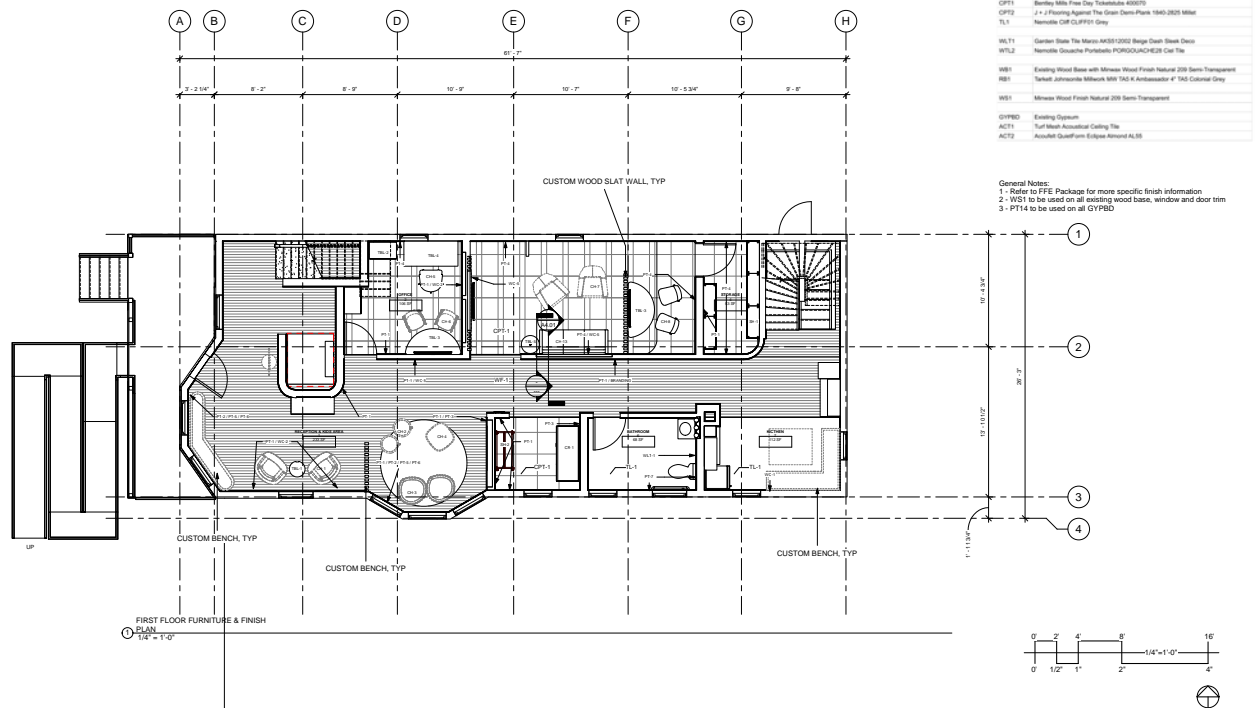
Room	Finish	Wall	Base	Door	Window	Stair	Handrail	Other
Room 1	PT14	PT14 & WS1	PT14	PT14	PT14	PT14	PT14	PT14
Room 2	PT14	PT14	PT14	PT14	PT14	PT14	PT14	PT14
Room 3	PT14	PT14	PT14	PT14	PT14	PT14	PT14	PT14
Room 4	PT14	PT14	PT14	PT14	PT14	PT14	PT14	PT14
Room 5	PT14	PT14	PT14	PT14	PT14	PT14	PT14	PT14
Room 6	PT14	PT14	PT14	PT14	PT14	PT14	PT14	PT14
Room 7	PT14	PT14	PT14	PT14	PT14	PT14	PT14	PT14
Room 8	PT14	PT14	PT14	PT14	PT14	PT14	PT14	PT14

FINISH LEGEND

PT11	Bergman Moore Sugar Coatings 2160-71 ALUMA Interior Paint Eggshell
PT12	Bergman Moore Red Paint 1308 ALUMA Interior Paint Eggshell
PT13	Bergman Moore Happy Ever After 173 ALUMA Interior Paint Eggshell
PT14	Bergman Moore Pale Cherry Blossom 2161-60 ALUMA Interior Paint Eggshell
PT15	Bergman Moore Creamy Fields 2034-30 ALUMA Interior Paint Eggshell
PT16	Bergman Moore Four Party 2020-30 ALUMA Interior Paint Eggshell
PT17	Bergman Moore Sugar Coatings 2160-71 ALUMA Bath and Spa Paint Matte
PT18	Bergman Moore Pale Cherry Blossom 2161-60 ALUMA Bath and Spa Paint Matte
PT19	Bergman Moore Red Paint 1308 Element Guard Exterior Paint Flat
PT20	Bergman Moore Creamy Fields 2034-30 Element Guard Exterior Paint Flat
PT21	Bergman Moore Four Party 2020-30 Element Guard Exterior Paint Flat
PT22	Bergman Moore Cream Fields 233 Advance Interior Paint Satin
PT23	Bergman Moore WGL-A Chalkboard Paint DMC-2078 Eggshell
PT24	Bergman Moore Reposevine Ceiling Paint 1084 Flat
WC1	Maharaja Acush 30050-000 Greenhouse
WC2	Maharaja Tab Wall Ridge 30050-011 Acryc
WC3	Maharaja Tab Wall Ridge 30050-000 Charco
WC4	Acushat Qualifon Edgecolor Finishes P25
WC5	Designing Wallscape P16 9623-404 Cloud
WP1	L and L Flooring Bridge Oak 1005721
CP15	Bentley Mills Fine Day Teakwood 600105
CP12	J + J Flooring Argent Teak Grain-Plank 1940-2823 Millat
TL1	Nemalite CR CLIFF91 Grey
WLT1	Garden State Tile Mosaic AK5011002 Beige Drift Blank Deck
PTL2	Nemalite Onyxite Porcelainite PORCQUAICHE2R Char Tile
WB1	Existing Wood Base with Minwax Wood Finish Natural 239 Semi-Transparent
WB2	Neutral Laminate Mimic 980 745 4-Panelboard 4' 10" Cabinet Gray
WB3	Minwax Wood Finish Natural 239 Semi-Transparent
GP10D	Existing System
ACT1	Tuff Coat Acoustical Ceiling Tile
ACT2	Acushat Qualifon Edgecolor Around AL58



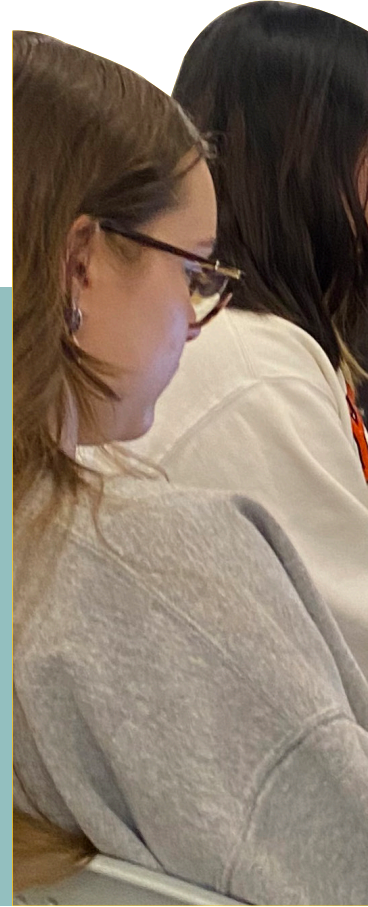
SOUTHSIDE COMMUNICATION CENTER
 2331 S SALINA ST, SYRACUSE, NY 13205



Drawn by: BRIANNA STARCK, SAVANNAH LEE, SIERRA KRIENKE
 Date: 11/16/2021
FIRST FLOOR FURNITURE & FINISH PLAN
 A1.13

“Collaborating with four interior design students from SU, we translated their plans for the SSCC into cost estimates, schedules, and value engineering assessments...our project highlighted real-world application and the value of collaboration amidst challenging timelines.”

- Ashley Woodroe



DESIGN & CONSTRUCTION MA





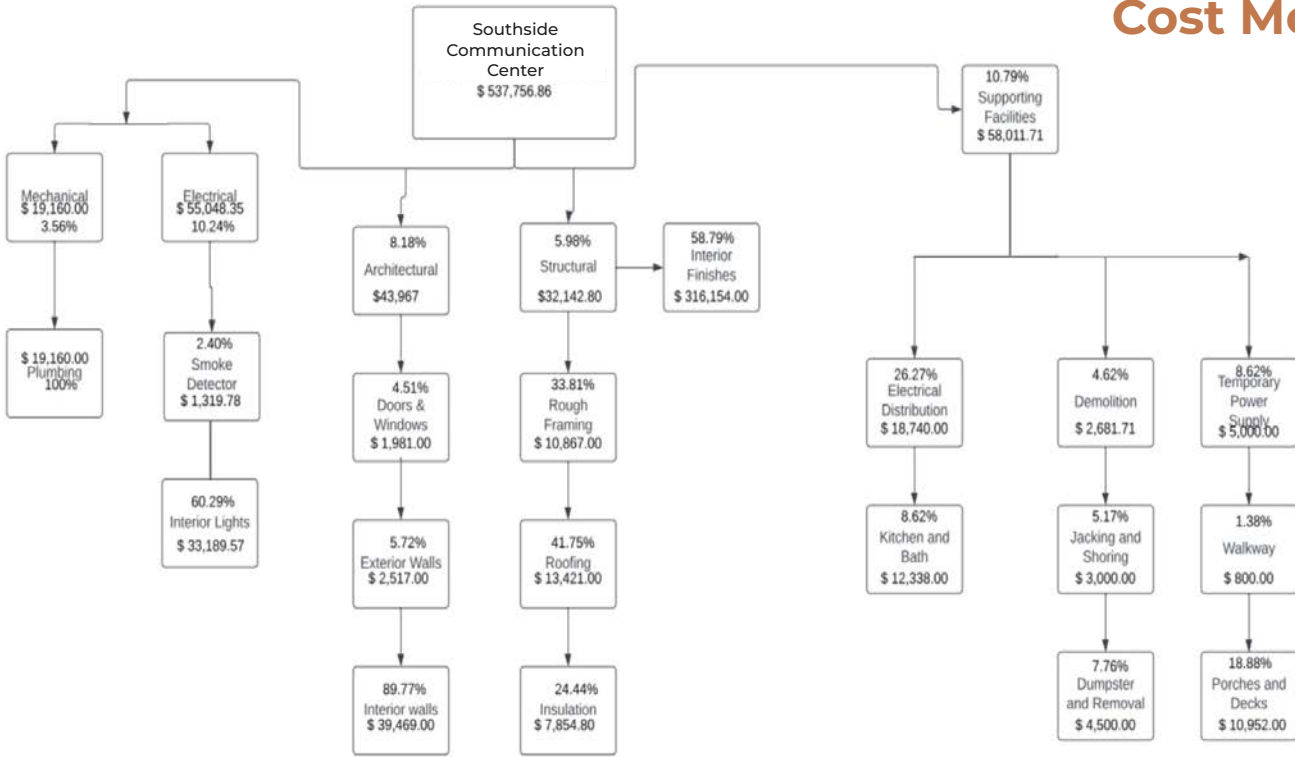
MANAGEMENT

Each ESF team was paired with an SU team, and students shared their work and insights in order to make the handoff as seamless as possible. The ESF students studied the construction documents and furniture, fixtures, and equipment booklet. After the initial meeting, students from both schools stayed in contact.

The official kick-off conference was held Tuesday, January 23. This conference began with a presentation by Project Manager Melanie Torres, before students broke out into teams. SUNY ESF students came to the Warehouse to see all of the materials from Meaningful Partnership Initiatives past and present.

Based on the information from EDI partner teams, CME students organized team meetings to research, discuss and plan the construction process of redesigning and rebuilding the Southside Communication Center. Every

Cost Model



Produced by Salahudeen Abdel-Razzaq, Ashley Woodroe, Erik Dighton, & Kurt Berlinghof

WinterGreen Construction								18 Mar '24 25 3 10 17 24 Apr '24 31 7 14 21 28 5 12 19 26 Jun '24 2 9 16 23 30 7 14 21 28 4 11 18 25 1 8 15 Sep '24											
ID	Task Mode	Task Name	Duration	Start	Finish	Predecessors	Resource Names												
1		Project Duration	102 days	Wed 3/6/24	Thu 7/25/24			Labor 1, Labor 2, Labor 3, Labor 4, Labor 5											
2	Split	Visit Site, Bring Materials and equipment	1 day	Wed 3/6/24	Wed 3/6/24		Labor 1, Labor 2, Labor 3, Labor 4, Labor 5												
3		Site Work And Demo	12.5 days	Thu 3/7/24	Mon 3/25/24	2		Labor 2 [75%], Labor 3 [75%]											
4		Remove Handicap Ramp	1 day	Thu 3/7/24	Thu 3/7/24		Labor 2 [75%], Labor 3												
5		Doors to be removed	1 day	Thu 3/7/24	Thu 3/7/24		Labor 4	Labor 4 [75%], Labor 5 [75%]											
6		Lockout TagOut	0.5 days	Fri 3/8/24	Fri 3/8/24	5	electrician[50%]	electrician [50%]											
7		Remove Electrical	2 days	Fri 3/8/24	Tue 3/12/24	6	electrician	Labor 1 [75%], Labor 2 [75%], Labor 3 [75%], Labor 4 [75%], Labor 5 [75%]											
8		Walls to be removed	4 days	Tue 3/12/24	Mon 3/18/24	7	Labor 1 [75%], Labor	Labor 1 [25%], Labor 2 [25%], Labor 3 [25%], Labor 4 [25%], Labor 5 [25%]											
9		Clean up throughout	12 days	Thu 3/7/24	Fri 3/22/24		Labor 1 [25%], Labor	Labor 1 [75%], Labor 2 [75%], Labor 3 [75%], Labor 4 [75%], Labor 5 [75%]											
10		Floor Finishes to be removed	5 days	Mon 3/18/24	Mon 3/25/24	8	Labor 1 [75%], Labor												
11		WoodWork	36 days	Mon 3/25/24	Tue 5/14/24	3		Labor 1, Labor 2, Labor 3, Labor 4, Labor 5											
12		Install 2x4 wood studs	3 days	Mon 3/25/24	Thu 3/28/24	3	Labor 1, Labor 2, Labor 3, Labor	Labor 1, Labor 2, Labor 3, Labor 4, Labor 5											
13		Install handicap ramp	2 days	Thu 3/28/24	Mon 4/1/24	12	Labor 1, Labor 2, Labor 3, Labor	electrician											
14		Install Electric	4 days	Thu 3/28/24	Wed 4/3/24	12	electrician	electrician											
15		Inspect Electric	1 day	Wed 4/3/24	Thu 4/4/24	14	electrician	electrician											
16		Test Electric	1 day	Thu 4/4/24	Fri 4/5/24	15	electrician	Labor 1, Labor 2, Labor 3, Labor 4, Labor 5											
17		Install Drywall	10 days	Fri 4/5/24	Fri 4/19/24	16	Labor 1, Labor 2, Labor	Labor 1											
18	Split	Floor Finishes to be Removed final 30%	2 days	Fri 4/19/24	Tue 4/23/24	17	Labor 1	Labor 2, Labor 3											
19		Install 2x4 wood studs final 30%	2 days	Fri 4/19/24	Tue 4/23/24	17	Labor 2, Labor 3	electrician											
20		Install Electric final 50%	4 days	Fri 4/19/24	Thu 4/25/24	17	electrician	Labor 4, Labor 5, Labor 1, Labor 2, Labor 3											
21		Install dry wall final 30%	1 day	Thu 4/25/24	Fri 4/26/24	20	Labor 4, Labor 5, Labor 1, Labor	Labor 1, Labor 2, Labor 3, Labor 4, Labor 5											
22		Mudding and taping	2 days	Fri 4/26/24	Tue 4/30/24	21	Labor 1, Labor 2, Labor 3, Labor	Labor 1, Labor 2, Labor 3, Labor 4, Labor 5											
23		Let drywall dry	1 day	Tue 4/30/24	Wed 5/1/24	22		Labor 1, Labor 2, Labor 3, Labor 4, Labor 5											
24		Sand Drywall	1 day	Wed 5/1/24	Thu 5/2/24	23	Labor 1, Labor 2, Labor	Labor 1 [50%], Labor 2 [50%], Labor 3 [50%], Labor 4 [50%], Labor 5 [50%]											
25		Inspect Drywall	1 day	Thu 5/2/24	Fri 5/3/24	24	Labor 1 [50%], Labor												

Project: Schedule for CME454 P
Date: Tue 3/26/24

Task	Project Summary	Manual Task	Start-only	Deadline
Split	Inactive Task	Duration-only	Finish-only	Progress
Milestone	Inactive Milestone	Manual Summary Rollup	External Tasks	Manual Progress
Summary	Inactive Summary	Manual Summary	External Milestone	



CONSTRUCTION MANAGEMENT

"I realized during our presentation to the community stakeholders that our work was helping them understand both possibilities and challenges of designing and implementing the project. I believe our clients will be better prepared to engage a professional design team and contractors and pursue project funding. That realization is very rewarding."

- Eliot Benman

EMATIC DESIGN



A large display board for the 'EMATIC DESIGN' section. It features a 'Concept Board' at the top with various images and text. Below it are several large-scale architectural site plans and diagrams. The board is titled 'UPA' at the bottom.

DESIGN DEVELOPMENT

CONSTRUCTION DOCUMENTS



A large, vertical display board for the 'DESIGN DEVELOPMENT' section. It is covered with a dense collection of smaller-scale architectural drawings, including floor plans, elevations, and sections, along with various notes and images.



A display board for the 'CONSTRUCTION DOCUMENTS' section. It features a vertical sequence of smaller-scale architectural drawings, including floor plans and sections, with red and white headers.



MEANINGFUL PARTNERSHIP EXHIBITION 2024



Since its establishment in 2017, the Meaningful Partnership Initiative has laid the foundation to provide a rich design education to students by collaborating with community organizations on an academic year long project to deliver thoughtful design solutions. Notably, this year, the EDI community project studio, in collaboration with the SUNY ESF Construction Management Program, received the 2024 Institutional Innovation Award from IDEC (Interior Design Educators Council) to recognize this impactful contribution.

CLOTHING DRIVE

Benefiting the Syracuse South Side Community



Donate to the community

DONATE IN SCHINE STUDENT CENTER

February 26th 12-3pm
February 28th 12-3pm
March 1st 12-3pm

IIDA SYRACUSE UNIVERSITY campus center

We are Accepting:

Jackets, Pants, Scarves, Hats, Gloves, Socks, Shoes, Bags, and any other clothing items

COMMUNITY SERVICE



The design students of IIDA at SU were inspired to continue their community service initiatives beyond the community design studio. They organized a clothing drive to support the South Side Communication Center, motivated by the center's Miss. Vicky's Closet, which provides free clothing to those in need. This act of community service exemplifies how the meaningful partnership encourages students to strive for positive change in their community, both in and out of the classroom.



April 24, 2024

Dear Seyeon, Zoriana and Endong,

The Shaw Center is again honored to be involved with your impactful work!

Truly meaningful work is exciting, reciprocal, and it really matters. Your project with the Southside Communication Center really matters, as demonstrated by the level of commitment your students realize through their Meaningful Partnership Project design and construction management work. Through another lens, the high level of commitment that you, as faculty, pour into this work frames its importance as a wholistically planned learning process as well as a design and construction project, an absolute model of educational community engagement.

I was personally excited to attend last fall's project launch and specifically remember the energy of the September 7th site visit. An engaged group of design students learned about the southside of Syracuse, heard about the Communication Center's history, its potential to house new and existing programs and its current challenges. Excellent student questions produced more dialogue about I-81's historic impact on the area, Blueprint 15's efforts to keep 'community' central in future solutions, and an honest acknowledgment of the difficulty of sustaining shared university and community programming. After a quick but thorough tour of the building, student teams busily measured, investigated and photo documented their new project's specifications in preparation for the research phase. Both the midsemester and final fall presentations, so professionally presented, bore evidence of well-done research on neighborhood history and current needs, design goals, raw materials, and costs.

At the Shaw Center, we employ student interns to do real engagement work, and believe that students know real work when they experience it. For me, the magic of this truly meaningful partnership project of yours is that, year after year, each student becomes absolutely invested in their work. This is evidenced by the fact that in January, with their fall course obligations completed, the designers voluntarily transition their designs into the hands of their ESF peers. This commitment is reciprocated by these ESF peers working diligently alongside the designers toward the semester long production of professionally delivered plans and construction documents. The result being a truly innovative collaboration in higher education that joins related fields of study but does that across public and private higher education classrooms. Staff at the Shaw Center were very happy, but not surprised, that this year the Interior Design Educators Council recognized this innovation. We applaud you on being selected as the winner of the 2024 IDEC Institutional Innovation Award, a recognition well deserved!

As a center which support Academic Community Engagement on the Syracuse University Campus, the Shaw Center for Public and Community Service relishes connection to projects such as this one and hope to continue this collaboration into the future. This Meaningful Partnership holds up long-standing community engagement at its best and we are thankful to be able to support that work.

Sincerely,

Laurel Morton

Shaw Center Coordinator
Mary Ann Shaw Center for Public & Community Service
Syracuse University

Mary Ann Shaw Center for Public & Community Service

111 Waverly Ave. Suite 102 Syracuse, NY 13244 T 315.443.3051 F 315.443.3365 ShawCenter.syr.edu

SPECIAL THANKS

Environmental and Interior Design Syracuse University

Seyeon Lee
Associate Professor

Zoriana Dunham
*Assistant Professor and
Program Coordinator*

Melanie Torres
Project Manager

Lillian Cubbin
Luke Emlet
Susan Gilmer-Hill
Roselynn Hodges
Jadyn Kowahl
Sierra Krienke
Jae Bin Lee
Savannah Lee
Xiqian Luo
Jessica McEvoy
Sebastian Melendez
Molly Menniges
Xinze Mu
Hartley Peterson
Madison Prunty
Christopher Rose
Afton Serviss
Brianna Starck
Maegan Warner
Emma Wasserman
Ruoyan Yu
Daiqing Zhang

Syracuse University Mary Ann Shaw Center for Public and Community Service

Pamela Heintz
Director

Laurel Morton
Head of Service Learning

Iona Volynets
*Service Learning Intern and
Project Manager*

Construction Management SUNY ESF

Endong Wang
Associate Professor

Salahudeen Abdel-Razzaq
Eliot Benman
Andrew Bergman
Kurt Berlinghof
Zachary Bernard
Erik Dighton
Oliver Donovan
Sam Graham
Susan Hodell
Gabriel Huchro
Kern Linder
Conor Mahoney
Kenna Maring
Jack McDonald
Robert Ottaviano
Michael Paetow
Aiden Parke
Matheus Pereira
Christian Rossi
Griffin Squires
Ashley Woodroe

South Side Communication Center

Marcelle Haddix
Associate Provost for Strategic Initiatives

Miranda Traudt
*Assistant Provost for the Arts
and Community Programming*

Sue and Leon Genet Gallery

Andrew Saluti
*Associate Professor and Program Coordinator
Museum Studies*

Abby Cullen
Trinity Lowe
Gallery Managers



Office of Strategic Initiatives

April 12, 2024

Dear Seyeon, Endong, and the Meaningful Partnerships Team,

I sincerely thank you all for your great efforts and completion of the Meaningful Partnership: Community Design Studio project at the South Side Communication Center. It has been an absolute pleasure to witness the hard work of students from Syracuse University's School of Design and SUNY's College of Environmental Science and Forestry come together to reimagine the South Side Communication Center to its fullest potential.

Each design team approached the project with great care and attention to the complex history of Syracuse's South Side neighborhood. Their designs paid tribute to the rich traditions of the area and always centered decisions with community at the forefront. The results were thoughtful, intricate, inspirational, and mission focused. The construction management teams adopted these designs with care and respect for their original intentions. And with thoughtful review, suggestions, and revisions, their efforts and expertise brought the designs to life.

Throughout the entire process the students demonstrated professionalism well beyond their years. Their passion and interest in community-based work was evident in their presentations, design, plans, and communications.

I am incredibly proud of the work this group has achieved and have learned a great deal through the process. Thank you for investing your time and expertise with us at The South Side Communication Center.

Sincerely,

Miranda Traudt

Assistant Provost for Arts and Community Programming
Director of the Coalition of Museums and Art Centers
Office of Academic Affairs

T 315.443.3821
mstraudt@syr.edu

900 S. Crouse Ave., Suite 220, Syracuse, NY 13244
syracuse.edu provost.syr.edu

Syracuse University

this book:

is printed on:
Domtar Cougar® 80# Text

- Forest Stewardship Council® (FSC®) Certified
- Member of Domtar EarthChoice® Product Line
- Sustainable Forestry Initiative® (SFI®) Certified Sourcing
 - Made with Total Chlorine Free (TCF) and
 - Elemental Chlorine Free (ECF) virgin fiber content
 - 10% post-consumer, Process Chlorine Free (PCF) and lignin-free fiber
- Manufactured under alkaline (acid-free) conditions

Soy Based Ink with low VOC

Ricoh
See <https://www.ricoh.com/sustainability/>

- Ansun Printing Pro
- Use Forest Stewardship Council (FSC) certified paper
 - Use a new varnish coating process that is environmentally-friendly
 - Use soy-based inks with low VOC and recycle all unused ink
 - Recycle our make-ready and scrap paper
 - Utilize short-run production approach keeping excessive content out of waste streams
- <https://www.ansun.biz/about-ansun/environmental-impact>

Alyssa Sgambati, '23
Environmental Design and Interiors BFA

Iona Volynets, '24
International Relations B.A | History B.A | Minor in Museum Studies

our paper



our ink



our printing press

our publisher

design and edited by

